



Supporter Newsletter Summer 2025

Acknowledgement of Country

In the spirit of reconciliation, The Wesley Hospital, as part of the wider UnitingCare family, pays respect to Elders past, present and emerging and the unique role Aboriginal and Torres Strait Islander Peoples play in the communities we serve.

We acknowledge our gratitude that we share this land today, our sorrow for the costs of that sharing, and our hope to move to a place of justice and partnership together.



THE WESLEY HOSPITAL FUNDRAISING

T 1800 961 331

E fundraising@wesley.com.au

W wesley.com.au/donate



From gratitude to giving: Jim's Story

In Kingaroy, Jim enjoys the satisfaction of achieving something every day and particularly loves to tinker with his old Ford Anglia.

He's also quietly making a difference through his monthly gifts to The Wesley Hospital, ensuring others can experience the same great care he did.

What stands out in Jim's memory isn't just the medical excellence, but the continuous thread of compassion that ran through every interaction that he had at The Wesley Hospital.

"From the moment I arrived, it felt different," he shares.

"Everyone seemed to know my name and the volunteers guided me where I needed to go, and one even held my hand as I was coming out of anaesthesia. That kind of care stays with you."

Since 2019, Jim has been making monthly gifts to The Wesley Hospital.

It's the generosity of monthly givers like Jim that helps provide the latest technology, attract leading medical expertise, and support ongoing staff development.

"Every month when I make my gift, I think about someone else getting that same reassuring care I experienced," Jim says.

"It's not just about the medical care – it's about feeling truly looked after during vulnerable moments."

For Jim, it's about helping the exceptional healthcare at The Wesley Hospital continue to be there for others, when they need it.

If you feel the same way, please contact our fundraising team on **1800 961 331** or **fundraising@wesley.com.au** to set up your monthly gift today.

A community's creative heart

When art meets compassion, extraordinary things happen.

Twenty years after its first appearance, *Bras by the Stars* transformed Toowong Village into a gallery of hope and healing, where ten Australian celebrities poured their creativity into helping raise funds for The Wesley Hospital Choices Cancer Support Centre.

Behind the colourful displays and artistic flair lies a deeper purpose – supporting a place where people living with cancer, and their loved ones, find more than just clinical care.

At Choices, they find understanding in the gentle nod of someone who's walked a similar path, expertise in the caring hands of dedicated professionals, and strength in the warmth of a community that truly gets it.

Here, no one walks alone. Whether it's through exercise classes that rebuild strength and confidence, complementary therapies that ease the journey, or simply sitting with others who understand, Choices wraps its arms around everyone who walks through its doors.

"What's different about Choices is, it has clinical expertise, but it also has the voice of a person who has lived experience," shares Leonie Young, Manager at Choices.

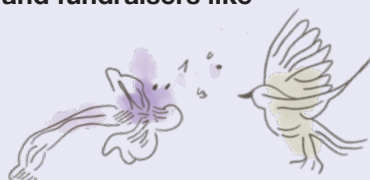
It's this unique blend that creates what Elaine, who found Choices during her treatment last year, calls "a safe haven."

"We all understand what we're going through," Elaine explains, her words capturing the essence of what makes Choices special.

To everyone who helped make this possible – from the dedicated Toowong Village team to every person who stopped to look, share, or give – thank you.

Choices is a community service providing information and support for women, men, their families and friends affected by cancer.

Supporting thousands of people every year, it is completely free thanks to the generosity of donors, community and fundraisers like *Bras by the Stars*.



The Ribbons of Hope bra was designed by Wesley volunteers as a vibrant and meaningful tribute, embodying strength, resilience and solidarity. The design features delicately intertwined ribbons, each representing a different cancer type, symbolising unity in the face of cancer.

EARLY DETECTION SAVES LIVES

- Whether you're due for your regular breast screening or have been putting it off, taking that step is important.
- Regular screening is recommended for women aged 50-74, though you may choose to start earlier.
- Remember, breast awareness is important for everyone – take the time to know what's normal for you, and encourage the people you care about to do the same.

From community support to life-changing care



In Brisbane's medical community, revolutionary change often begins with a single gathering.

Just as they have done every year for the past decade, last September, the Gambaro Community demonstrated this power, raising more than \$545,000 at their annual prostate cancer care luncheon – funding that will enhance future prostate cancer care services and treatment at The Wesley Hospital.

"For my family and I, taking on prostate cancer has become something deeply personal," reflects John Gambaro.

"It's not just about supporting a cause; it's about fighting for the lives of people we care about."

Among the faces in the crowd this year was Andrew, a builder whose personal experience with prostate cancer embodies the very reason this support is so vital.

While Andrew approached his diagnosis with a characteristic 'fix it' mindset, the impact on his family revealed the deeper emotional challenges that come with a cancer diagnosis.

"It was a massive shock," recalls his wife Jo, speaking of the moment they shared the news with their teenage children, Ethan and Eliza.

When their daughter asked, *"Is Dad going to die?"* it brought home the stark reality many families face when confronting this disease.

After carefully researching his options, Andrew chose robotic surgery at The Wesley Hospital.

Thanks to the advanced surgical equipment – made possible through years of support from people like you – the cancer was successfully removed, and he experienced a swift recovery, bringing immense relief to his family.

"The money people donate helped save my life," Andrew stated, highlighting the direct impact of giving on patient outcomes.

"What makes the Gambaro family so special is how they've created a true community of care," shares Wesley Urologist, Dr Boon Kua.

"Their support goes beyond the incredible fundraising – they've helped build connections between patients and medical teams, ensuring more people can access the care they need. It's a remarkable example of how one

family's dedication can touch so many lives."

The annual luncheon's success represents more than just funds raised; it symbolises hope for countless men and their families who will face prostate cancer in the future.

As we look forward to the continued advancement of prostate cancer services, we extend our deepest gratitude to all our dedicated donors and supporters.

Whether through attending events, making donations, or championing our cause, your collective generosity creates a powerful ripple effect.

You don't just fund facilities and equipment – you transform lives, offer hope, and help write success stories like Andrew's.

Together, we're building a future where more families can face prostate cancer with confidence, knowing they have the best possible care and support behind them.



Pictured: Associate Professor Troy Gianduzzo, John Gambaro and Dr Boon Kua.



Your generosity at work

In a quiet room at The Wesley Hospital, pulses of electricity more powerful than a lightning bolt are being precisely controlled to transform prostate cancer treatment. This is the NanoKnife system – made possible through donor support.

Unlike traditional treatments that use heat or cold, this technology can target cancer cells with microscopic precision while preserving the delicate healthy tissue surrounding them.

“For me, it’s not just about the technology – it’s about what it means for each person who walks through our doors,” shares urologist, Dr Peter Campbell, who has been performing surgeries at The Wesley since 2005.

“When someone sits across from me after a diagnosis, they’re facing one of the hardest moments of their life. Having this level of precision technology means I can offer them hope along with treatment options.”

This technology works like a microscopic sculptor, precisely removing cancer cells while preserving the delicate network of nerves and blood vessels that surrounds them.

“The level of expertise here at The Wesley makes it one of the leading prostate cancer treatment centers in Australia,” Wesley Urologist Associate Professor Troy Gianduzzo explained.

“We have excellent trained surgeons, but it’s the combination of expertise and technology that makes the real difference. This isn’t just about having advanced

equipment – it’s about having the right tools in the right hands to give our patients the best possible outcomes.”

For Dr Ross Fowler, the impact extends beyond individual procedures.

“Without those donations, we wouldn’t be able to offer the full range of services that we can,” he shared.

The ripple effect of this support touches every aspect of care at The Wesley.

From the initial diagnosis, where advanced imaging helps detect cancer earlier than ever before, to the recovery rooms where patients benefit from shorter hospital stays and faster healing times – your generosity shapes every step of the process.

This is more than a story about medical technology. It’s about a community coming together to ensure that world-class care is available right here in Queensland.

Every donation, whether large or small, adds to this legacy of hope and healing.

Your support isn’t just funding equipment – it’s helping write countless stories of hope, recovery, and renewed life.

As The Wesley continues to advance prostate cancer care, your generosity ensures that more Queenslanders will have access to the most effective treatments available, close to home when they need them most.



Thank you for advancing breast cancer detection

Inside The Wesley Breast Clinic, technology and compassion meet in life-changing moments.

Here, where women arrive with both hope and anxiety, we continue to advance breast cancer detection through donor support – replacing our equipment with the most up-to-date 3D Tomography machines as part of our ongoing mission to provide the best care to patients.

“When you first walk into the clinic, you might be anxious and worried,” shares Sarah*, a regular patient.

“But the professionalism of the clinic’s staff and the kindness you experience soon makes you feel calm and confident you’re in good hands.”

Unlike traditional 2D mammograms that take just two images of each breast, these advanced machines move in an arc, capturing multiple images from different angles. These are then combined to create detailed, three-dimensional views that allow radiologists to see through overlying tissue with remarkable clarity.

“The precision of these updated 3D Tomography machines enhances our diagnostic capabilities significantly,” explains Dr Michelle Delamont, Director at the Wesley Breast Clinic. *“They allow us to detect subtle changes in breast tissue that might otherwise be obscured, leading to earlier detection and more accurate diagnoses.”*

The impact reaches beyond individual screenings. With improved accuracy, fewer women need to return for additional imaging or undergo unnecessary biopsies. This means less anxiety, less radiation exposure, and more efficient care for everyone who walks through our doors.

This continued advancement in care was made possible through the generosity of our supporters.

Your gifts help ensure that women across Queensland have access to the most up-to-date breast cancer detection technology available, close to home where they need it most.

* Name changed for privacy reasons

One gift, countless thanks

Behind every successful cardiac procedure at The Wesley Hospital is a team of dedicated healthcare professionals equipped with the tools they need to save lives.

Thanks to one donor's thoughtful gift of a specialised TAVR (Transcatheter Aortic Valve Replacement) equipment trolley, that critical work just became more efficient.



Pictured: Wesley team with the new equipment trolley

"Having this trolley has made a huge positive impact to the care we provide during critical procedures," shares Kristina McMillan, Acting Clinical Nurse Manager.

"The equipment is readily available for staff exactly when they need it during procedures."

During complex procedures like valve replacements, every moment counts.

With specialised equipment now strategically positioned and instantly accessible, our medical teams can focus entirely on what matters most – providing outstanding patient care.

This is the power of thoughtful giving – where one person's decision to support healthcare creates ripples that touch countless lives, from the medical teams providing care, to every patient who walks through our doors.

Join us to celebrate your impact

You've helped transform countless lives through your generous support of The Wesley Hospital. Now, we'd love to thank you in person and share how your giving continues to make a difference.

Please join us for our *Donor Appreciation High Tea*, where you'll meet some of the healthcare teams whose work you've made possible, hear inspiring stories of impact, and learn about exciting future initiatives that will help shape healthcare for generations to come.

When:
Wednesday 2 April 2025,
10.30am - 12.00pm

Where:
Evan and Mary Thompson Auditorium,
The Wesley Hospital

This special morning is our way of saying thank you to all our supporters.

To RSVP, please call **1800 961 331** or email **nicole.williams@ucareqld.com.au**



Every legacy tells a story

A premature baby thrives in a state-of-the-art humidicrib. A patient receives pioneering cancer treatment close to home. A young nurse develops her specialised skills through world-class training.

These moments of care and healing share something remarkable in common - they're made possible through the foresight and generosity of people who chose to leave a gift in their Will to The Wesley Hospital.



For Ruth (pictured), a cancer survivor, this impact was deeply personal.

"The staff were so lovely, and the care provided to me has been priceless," she shares.

"When you're going through treatment, having access to the best possible care, close to home and family, means everything."

"To have the specialists all in the one facility, all working together - I feel I could not be getting better care than I am getting at The Wesley Hospital," reflects Marjorie, (pictured) another patient whose life has been touched by donor support.



Your generosity also helps nurture tomorrow's healthcare leaders.

Through programs like the Noel Kahler Quality Improvement Leadership Program, emerging clinical talents are developed and supported.

When donors helped bring the first 3D Tomography machine to The Wesley Breast Clinic, they transformed early detection capabilities for Queensland women, bringing comfort and peace of mind to thousands of families.

"The Wesley wouldn't be what it is without the generous donations we've received over the years," notes Wesley Urologist, Dr Ross Fowler.

Behind every piece of equipment, every program, and every innovation are people who chose to help shape the future of healthcare through their legacy.

If you'd like to learn more about leaving your own legacy of care, our Gifts in Wills team would love to have a friendly, confidential chat.

Contact Nicole Williams by emailing plannedgiving@ucareqld.com.au or by calling **1800 961 331** to discover how you can help shape the future of healthcare for generations to come.

